

# WMS PTA Meeting

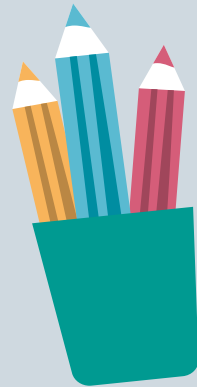
**#BeConsistent**

**Williamsburg Middle School**  
**September 24, 2024**



# Agenda

- ❑ Welcome
- ❑ Introductions
- ❑ Accomplishments
- ❑ Student Academic Performance
- ❑ Student Wellbeing
- ❑ Activities
- ❑ Upcoming Events



# WMS Administration

Bryan Boykin

Principal

Yolanda Nashid

Assistant Principal, 6th Grade (Grizzlies, Coyotes)

Nicole Johnson

Assistant Principal, 7th Grade (Capitals, Wizards)

Colleen Koval

Assistant Principal, 8th Grade (Patriots, Cavaliers)

Ashley Hogwood

Activities Coordinator

TBD

Director of Counseling



# W In Everything



- ☐ **Academics**
- ☐ **Arts**
- ☐ **Athletics**
- ☐ **Character**
- ☐ **Citizenship**

- **2023 US Department of Education National Blue Ribbon School**
- **Top 15% nationally in Reading / Math**
- **2023,2024 VMEA Superior Rating**  
**(chorus/band/orchestra)**
- **US News & World Report #5 Middle School in Virginia**
- **2023 APS County Champions - Girls Basketball, Track & Field - Co-Champions Girls Soccer, Boys Basketball**
- **Wolfbots ranked 19th in VA**
- **Yearbook earned a Jostens Gold Award**



# Student Academic Performance

[VDOE School Quality Profile Link](#)

# 23-24 SOL Pass Rates Comparisons

## READING 96%

6th Grade: 96.5% (+1.8%)

Pass: 277/287

Pass Adv: 33.45%

7th Grade: 95.9% (+3.4%)

Pass: 235/245

Pass Adv: 29.1 %

8th Grade: 94.5% (-1.7%)

Pass: 259/274

Pass Adv: 29.2%

## SCIENCE (8TH)

Pass Rate: 94%

Pass: 256/274

Pass Adv: 22.3%

## CIVICS & ECON.

Pass rate: 96% (+5%)

Pass 231/241

Pass Adv: 35.7%

# 23-24 MATH SOL Pass Rate: 95%

## Math 6

96.4% (+1.7%)

(22-23 SY: 94.8%)

277/287: Passed

Pass Adv: 36.7%

## Math 7

76.5% (-2.9%) (22-23 SY: 78.8%)

52/68: Passed

Pass Adv:

1.5%

## Math 8

95.1% (0.1)

(22-23 SY: 95.2%)

251/264

Pass Adv: 51.4%

## ALGEBRA 1

225/227: Passed: 99.1% (+0.5%)

Pass Adv: 41.4%

## GEOMETRY

41/41 = Passed: 100% (same as last year)

Pass Adv: 65.8%



# 23-24 Sub Group SOL Pass Rates

(compared to 22-23SY)

## READING

	22-23 SY
EL 1-4:	60% (67%)
Black:	78% (76%)
Econ Disadv:	81% (84%)
SWD:	83% (74%)
Hispanic:	89% (92%)

## MATH

	22-23 SY
EL (1-4):	70% (86%)
Black:	78% (71%)
Econ.Disadv.:	71% (84%)
SWD:	79% (75%)
Hispanic:	90%

# 23-24 Sub Group SOL Pass Rates

(compared to 22-23SY)

## HISTORY

### 22-23 SY

EL 1-4: 0% (0%)

Black: 67% (63%)

Econ Disadv: 75% (75%)

SWD: 86% (68%)

# 23-24 Sub-group comparisons to 22-23SY

SWD

HISPANIC

BLACK

READING 83% (+9%)

READING 89% (-3%)

MATH 79% (+4.0%)

MATH 90% (-2%)

SCIENCE 74% (-7%)

79% (-10%)

CIVICS & ECON 86% (+18%)

READING 78% (+2%)

MATH 78% (+7%)

SCIENCE 88% (+55%)

CIVICS & ECON 67% (+4%)

SCIENCE

CIVICS & ECON 100% (+17%)

# WMS Action Plan

# 24-25 School Plan Goals

## MATH: (All Grades): 95%

Black students increased performance from 71% to

**78%**

SWD increased performance from 75% to **79%**.

### Key areas of needs:

Black: 78%

EL 1-4: 70 %

Econ Disadvantage 71%



By June 2025, opportunity gaps on the Math SOL (aggregated for all grade levels) will be reduced by the following tiered goal:

Black - Increase pass rate from **78% to at least 80%**, reducing the gap from 17% to 15%

SWD - Increase pass rate from **79% to at least 81%**, reducing the gap from 16% to 14%

Econ. Disadvantaged - Increase pass rate from **71% to at least 74%**, reducing the gap from 24% to 22%

## READING (aggregated for all grades): 96%

Black students increased performance from 77% to

**78%**

SWD increased performance from 74% to **83%**

EL students decreased 67% to **60%**

### Key Areas of Needs:

Black: 78%

Hispanic: 89%

SWD: 83%

Econ Disadvantage: 81%.

EL students decreased 67% to 60%



By June 2025, opportunity gaps on the Reading SOL (aggregated for all grade levels) will be reduced by the following tiered goal:

Black - Increase pass rate from **78% to at least 80%**, reducing the gap from 18% to 16%

EL - Increase pass rate from **60% to at least 64%**, reducing the gap from 36% to 32%

SWD - Increase pass rate from **83% to at least 85%**, reducing the gap from 13% to 12%

Econ Disadv. - Increase pass rate from **81% to at least 83%**, reducing the gap from 15% to 14%



# Student Wellbeing





# School Counselors

Counselor	Grade Level
<b>Paul Gardner</b>	<b>6th Grade</b>
<b>Gretchen Brenckle</b>	<b>7th Grade</b>
<b>Ashley Bleakley</b>	<b>8th Grade</b>
<b>Natalie Battle</b>	<b>Intervention Counselor</b>

## School Counselors:

- Role with students to each grade level
- Provide short-term counseling, skills development and interventions
- Individual and small group counseling
- Invite all new students to a New Student Group
- Conduct classroom lessons through core classes and Health and PE classes
- Student can see their counselor by asking a teacher to come see them or messaging them on Canvas
- Collaborate with parents and teachers to support all students





“As a classroom community, our capacity to generate excitement is deeply affected by our interest in one another, in hearing one another’s voices, in recognizing one another’s presence.”

-Bell Hooks, author and social activist





# What our Students Report with SEL Survey



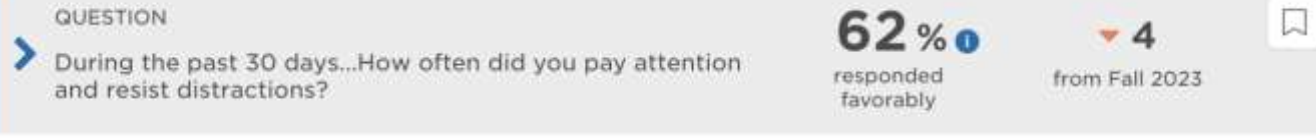
Social Awareness - 68%, down 1%



# What our Students Report with SEL Survey



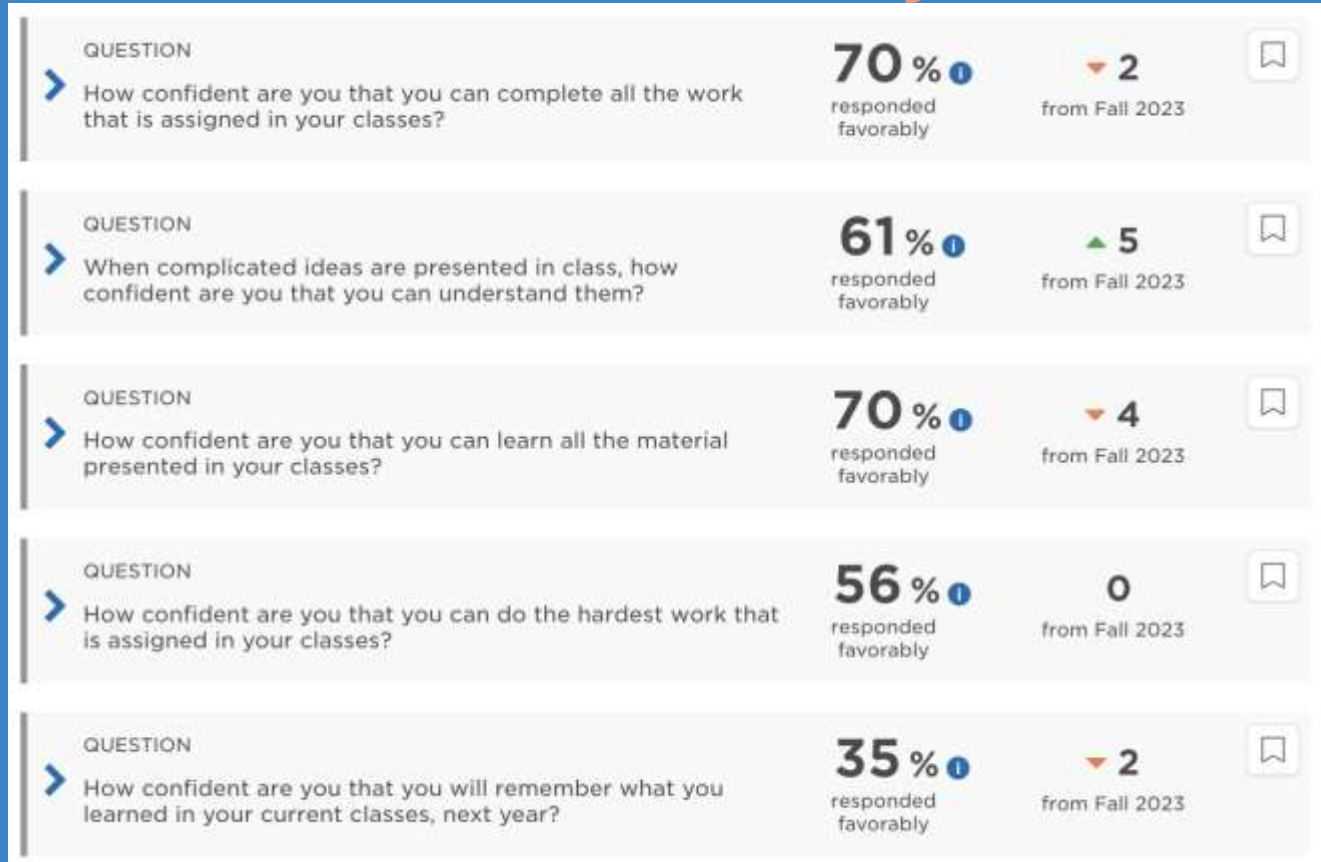
Self Management - 78%, down 3%



# What our Students Report with SEL Survey



Self  
Efficacy  
58%,  
down 1%






# How are we promoting SEL?



- ☐ Fostering Positive Relationships

---
  - ☐ Establishing a Positive Classroom Environment (3 R's)

---
  - ☐ Implementing SEL in our Classes

---
  - ☐ Modeling SEL
- 

# New Student Groups

**7th and 8th Grade School Counselors will run a small group for new students:**

- Students can meet other new students
- Ask questions that may not be gone over in classes
- Talk about ways to get involved and feel a part of the WMS Community

**6th Grade School Counselor will run a transition small group**

- Talk about transitioning to a new school and middle school
- Connect with other students feeling the same way about the transition
- Ask additional questions about WMS
- Talk about ways to get involved and feel a part of the WMS Community



# **ACTIVITY FAIR DATES & AFTER SCHOOL CLUB DATE**

**\* Activities Fair is:**

**Monday, September 23rd for 6th graders ONLY**

**Tuesday, September 24th for 7th and 8th graders**

**(late buses will be provided)**

**\* After School clubs begin Monday, September 30th**

**Late Buses are provided on Monday, Tuesday, Wednesday,  
and Thursday**

# WILLIAMSBURG AFTER SCHOOL SCHEDULE

- **Two After School Periods (ASP)** at Williamsburg Middle School.
- At dismissal, report directly to your after school activity or sport.
  - **ASPI: 2:45 - 3:30**
  - **ASPII: 3:30 - 4:00**

★ **Late buses leave promptly at 4:15pm**



\* **Late Buses are provided on Monday, Tuesday, Wednesday, and Thursday**

# STUDENT ACTIVITIES AND SPORTS

- Ultimate Frisbee
- Basketball (Boy's and Girls)
- Tennis
- Wrestling
- Soccer (Boys and Girls)
- Cheerleading
- Swimming
- Track
- Intramurals
- Robotics Club
- Model UN
- Inked
- Math Counts
- TAB

**\*Clubs vary by year**



We encourage our student to express and share their interest by creating their own clubs if they don't see a club of their interest.

Students will need to see Ms. Hogwood for they will need to write up their proposal and submit it to her.



# Communication is KEY

Please monitor the school website for information

**PARENT SQUARE** (division wide family-school communication)

- ☐ Should have or will receive an activation email
- ☐ If you did not register, you should have or will receive text, email, and phone notifications
- ☐ Questions? Please email [parentsquare@apsva.us](mailto:parentsquare@apsva.us)

<https://www.apsva.us/departments/school-community-relations/parentsquare>

**ParentVUE** remains the APS platform for updating student and family information, accessing transportation information and receiving student academic progress report.

Also, please communicate with your child's teachers and school counselor to discuss concerns about your child's progress.

# GET INVOLVED! WMS PTA



**Williamsburg Middle School**

**PTA<sup>®</sup>**

*everychild.onevoice.<sup>®</sup>*

**President:** Jill Gaspar

**Email:** [president@wmspta.org](mailto:president@wmspta.org)

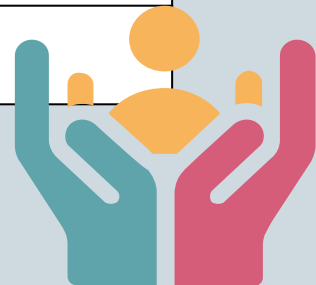
**Website:** [www.wmspta.org](http://www.wmspta.org)

**Facebook:** Williamsburg Middle School PTA

**Twitter:** @wmspta\_wolves

# Upcoming Events

<b>Hispanic Heritage Month</b>	<b>APS Band Showcase 10/24</b>
<b>Suicide Prevention Month</b>	<b>Classroom Bullying Lessons</b>
<b>“Pinkout”</b>	<b>Fall Conferences 10/10pm 10/11am</b>
<b>Unity Day ( Wear Orange )</b>	<b>Wolftime Begins 10/21</b>
<b>School Pictures October 15/16</b>	<b>Fall Festival 11/8</b>



**Questions?**

**Thank you!**